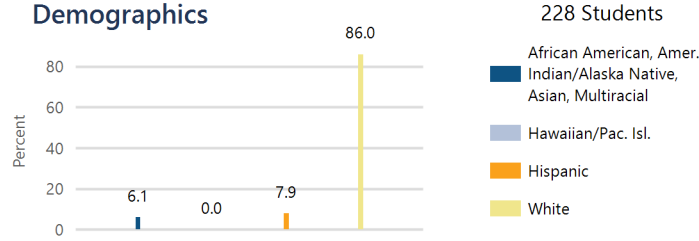




Perry-Lecompton Middle -
Perry Public Schools USD 343

408 Lecompton Rd, Perry, KS 66073
 (785) 597-5159
 www.usd343.net
 Principal: **Eryn Moland**

System Accreditation Status: **Accredited**
 ESSA Annual Meaningful Differentiation: **Meeting**
 Grades: **5-8**
 Superintendent: **J.B. Elliott**

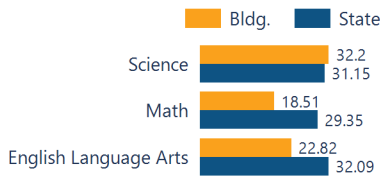


District Kansans Can Star Recognition

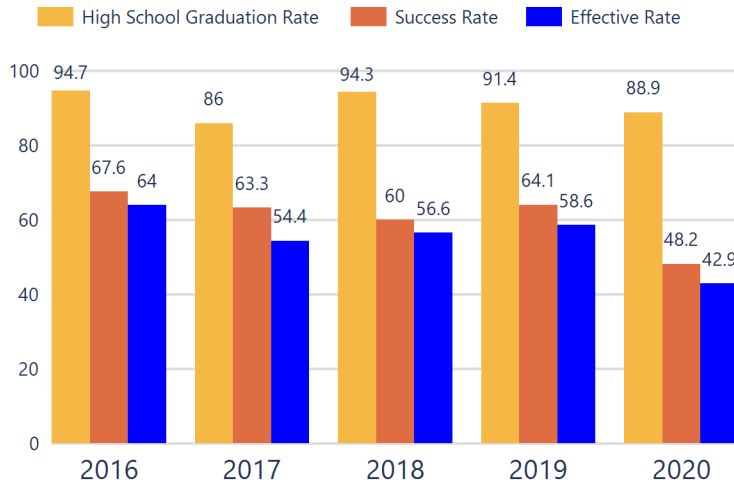
	Gold	Silver	Bronze	Copper
Social-Emotional Growth				★
Kindergarten Readiness			★	
Individual Plan of Study				
Academically Prepared for Postsecondary				
Civic Engagement				
High School Graduation		★		
Postsecondary Success				★

Academically Prepared for Postsecondary Success

The percentage of students who scored at Levels 3 and 4 on the state assessment.



District Postsecondary Effectiveness



Kansans CAN lead the world!
 Graduation **95%**
 Effective Rate 70-75%

Five-Year Graduation Avg 91.2%

Five-Year Success Avg 61.0%

Five-Year Effective Avg 55.7%

95% Confidence Interval for the Predicted Effectiveness Rate 56.7 - 59.5%

The numerator and denominator in the Five-Year Averages contain total student counts over five years (2016-2020) and are rounded to the nearest whole number.

- Graduation Rate:** The 4-year adjusted cohort graduation rate is the number of students who graduate in four years with a regular high school diploma divided by the number of students who entered high school as 9th graders four years earlier (adjusting for transfers in and out).
- Success Rate:** A student must meet one of the four following outcomes within two years of High School graduation.
 - Student earned an Industry Recognized Certification while in High School.
 - Student earned a Postsecondary Certificate.
 - Student earned a Postsecondary Degree.
 - Student enrolled in Postsecondary in both the first and second year following High School graduation.
- Effective Rate:** The calculated Graduation Rate multiplied by the calculated Success Rate.

GRADUATION RATE

The four-year adjusted cohort graduation rate is the percentage of students in a cohort, adjusted for transfers into and out of the school, district, or state, who graduate with a regular high school diploma within four years of entering high school.

ATTENDANCE RATE

Rate at which students are present at school, not including excused or unexcused absences.

CHRONIC ABSENTEEISM

Percentage of students who miss 10% or more of school days per year either with or without a valid excuse.

DROPOUT RATE

The dropout rate is calculated annually and reflects the number of seventh– twelfth grade students who drop out in any one school year. A dropout is any student who exits school between October 1 and September 30 with a dropout EXIT code AND does not re-enroll in school by September 30.

State: **N/A** School ESSA Operating Expenditures Per Pupil 89.3

Expenditures reflect those for the normal day-to-day operation of schools as reported by the Local Education Agency. The following expenditures are excluded: capital outlay, school construction and building improvements, equipment and debt services. **\$10,807**
 State: **\$13,814**

92.6% State: 92.1

20.3% State: 25.4

N/A State: 1.4

Click here for State Financial Accountability.



School Academic Success

State Assessment scores are displayed by student subgroup over three years time in three subjects: Math, English Language Arts (ELA), and Science. Assessment scores are not available for the 2020 school year.

Academically Prepared for Postsecondary Success

ALL STUDENTS

	2019-20			2020-21			2021-22		
	Math	ELA	Sci	Math	ELA	Sci	Math	ELA	Sci
Level 1	N/A	N/A	N/A	40.54	39.01	37.03	38.88	35.61	33.05
Level 2	N/A	N/A	N/A	44.59	37.21	26.85	42.59	41.55	34.74
Level 3	N/A	N/A	N/A	12.16	19.28	29.62	16.20	19.17	19.49
Level 4	N/A	N/A	N/A	2.70	4.48	6.48	2.31	3.65	12.71

FREE AND REDUCED LUNCH STUDENTS

	2019-20			2020-21			2021-22		
	Math	ELA	Sci	Math	ELA	Sci	Math	ELA	Sci
Level 1	N/A	N/A	N/A	43.75	46.15	34.28	46.29	57.40	46.15
Level 2	N/A	N/A	N/A	39.06	35.38	34.28	44.44	24.07	34.61
Level 3	N/A	N/A	N/A	14.06	15.38	28.57	7.40	14.81	11.53
Level 4	N/A	N/A	N/A	3.12	3.07	2.85	1.85	3.70	7.69

STUDENTS WITH DISABILITIES

	2019-20			2020-21			2021-22		
	Math	ELA	Sci	Math	ELA	Sci	Math	ELA	Sci
Level 1	N/A	N/A	N/A	81.57	87.17	69.56	65.62	78.12	53.33
Level 2	N/A	N/A	N/A	15.78	12.82	21.73	28.12	15.62	33.33
Level 3	N/A	N/A	N/A	2.63	0.00	8.69	6.25	6.25	0.00
Level 4	N/A	N/A	N/A	0.00	0.00	0.00	0.00	0.00	13.33

AFRICAN-AMERICAN STUDENTS

	2019-20			2020-21			2021-22		
	Math	ELA	Sci	Math	ELA	Sci	Math	ELA	Sci
Level 1	N/A	N/A	N/A	N/A	N/A	N/A	N/A	N/A	N/A
Level 2	N/A	N/A	N/A	N/A	N/A	N/A	N/A	N/A	N/A
Level 3	N/A	N/A	N/A	N/A	N/A	N/A	N/A	N/A	N/A
Level 4	N/A	N/A	N/A	N/A	N/A	N/A	N/A	N/A	N/A

HISPANIC STUDENTS

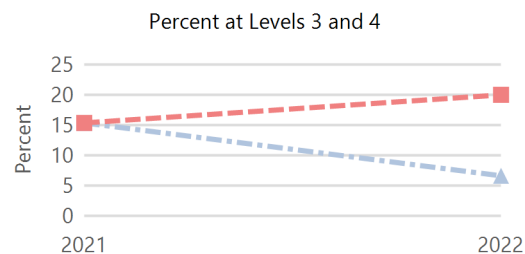
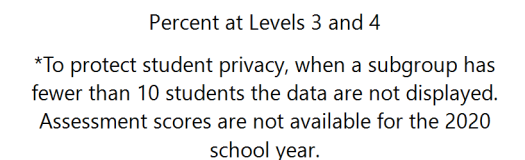
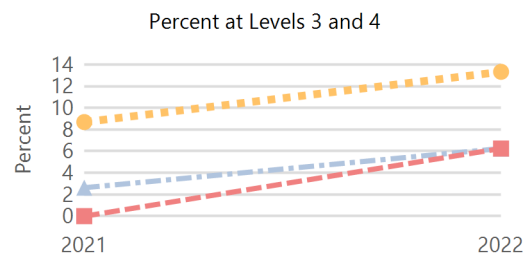
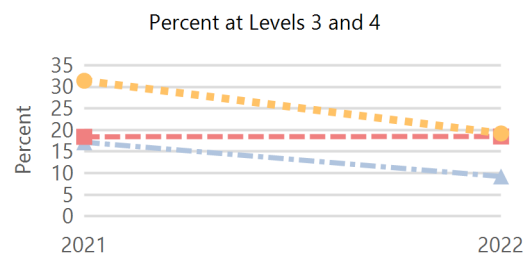
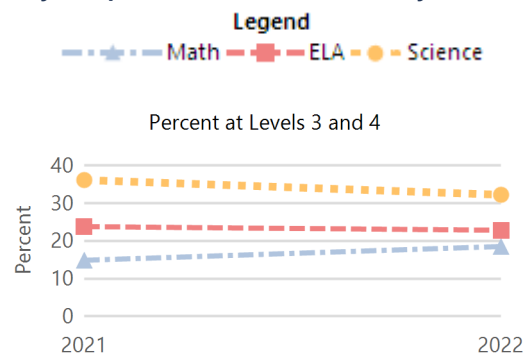
	2019-20			2020-21			2021-22		
	Math	ELA	Sci	Math	ELA	Sci	Math	ELA	Sci
Level 1	N/A	N/A	N/A	30.76	38.46	N/A	33.33	53.33	N/A
Level 2	N/A	N/A	N/A	53.84	46.15	N/A	60.00	26.66	N/A
Level 3	N/A	N/A	N/A	15.38	15.38	N/A	6.66	20.00	N/A
Level 4	N/A	N/A	N/A	0.00	0.00	N/A	0.00	0.00	N/A

N/A: To protect student privacy, when a subgroup has fewer than 10 students, the data are not displayed.

ACT Performance (2022 School Year)

ACT is a national college admissions exam that includes subject level tests in English, Math, Reading and Science. Students receive scores that range from 1 to 36 on each subject and an overall Composite score. This report provides the average Composite score for the 2022 graduating seniors who took the ACT as sophomores, juniors, or seniors.

Note: Not all eligible students completed an ACT.



Building

State **19.8**